

# PA-NJ American Chestnut Conservation Mission # 2

**Background:** The area is sparsely populated. It is suspected that there may be chestnuts in this area based on historic chestnut range maps and habitat, however there are few records of surviving American chestnuts in this area. Due to the variety of habitats here and scientific study results, chestnuts found in this area are suspected to have a greater diversity of genetic material. If present, they would be a valuable addition to the conservation program. This is a great opportunity for individual hikers and conservation groups to help forward the restoration mission of the American Chestnut Foundation.

**Mission:** Locate surviving wild type American chestnuts in southeastern portion of New Jersey. Focus exploration on areas highlighted on the following maps. Report findings to Sara Fitzsimmons, TACF Chief Conservation Officer by following the instructions below.

## Two Ways to Report a Tree

- **Tree Locator Form:** Download the form from our Chapter website ([www.patacf.org](http://www.patacf.org)) or request a printed form from the office (814-863-7192). Fill out the form with as much information as possible. Send a form for each tree, along with leaf and twig sample.
- **TreeSnap.org:** Use your smartphone to report a tree via the [TreeSnap.org](http://TreeSnap.org) app. Note: We still require a leaf and twig sample for trees reported electronically. Include your contact information and TreeSnap identification number for each tree you report.

***Remember,** whether you use a paper form or the smartphone app, we need for you to submit a leaf and twig sample for each reported tree (if at all possible). Photos can be helpful but are not required and do not take the place of a leaf and twig sample. Email photos to [mail@patacf.org](mailto:mail@patacf.org)*

# How to submit a sample:

## Submitting a Leaf and Twig Sample

- Cut 6-12" twig with mature leaves attached.
- Press the sample flat between 2 pieces of **paper towel and cardboard**
- Send via USPS in a large envelope – do not overnight ship.

### **Ship to:**

#### **PSU – Tree Locator Form**

108 Business Services

206 Forest Resources Lab

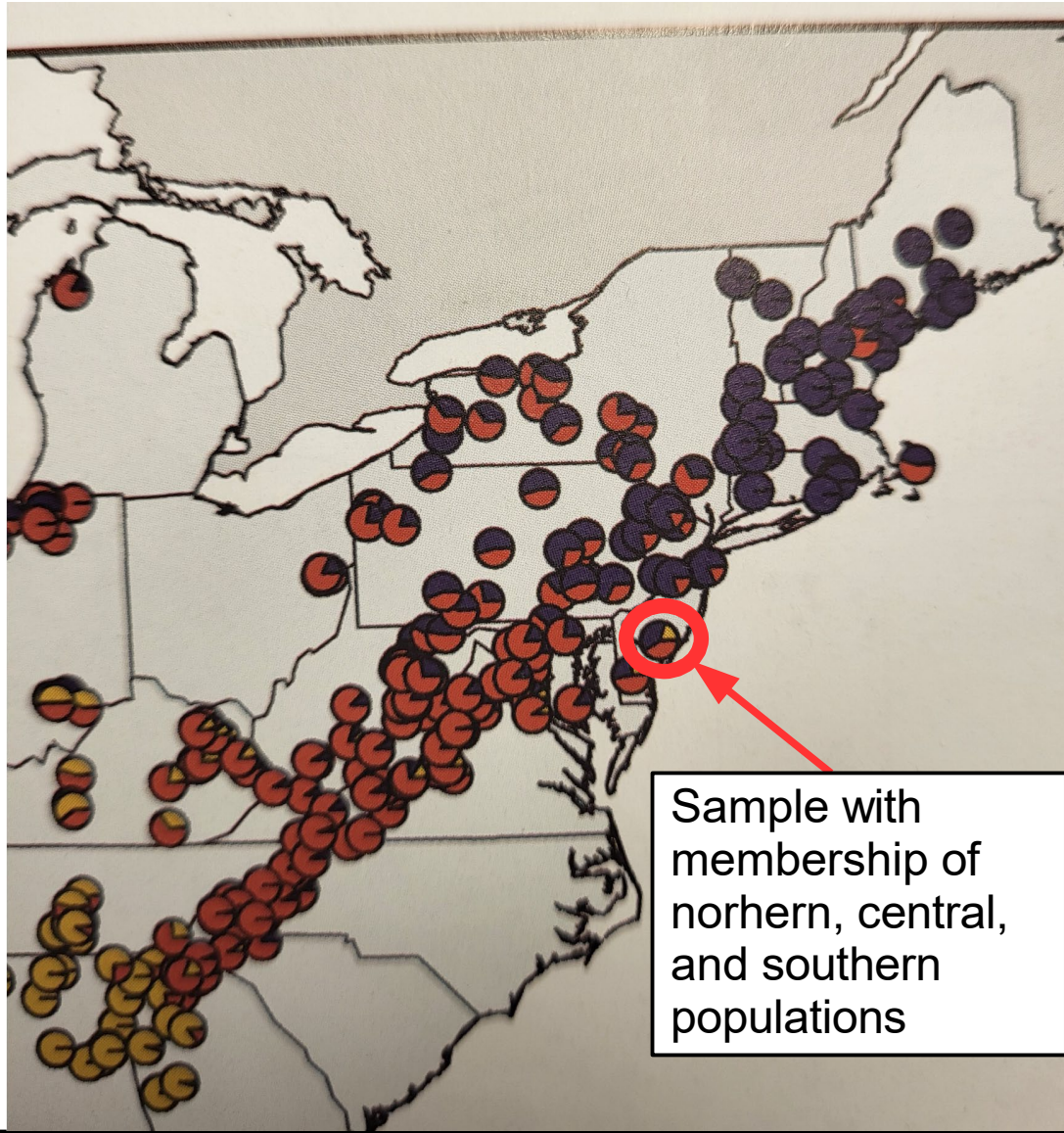
University Park, PA 16802

- Do not use plastic which will hold in moisture and cause mold to grow.



*Learn more about our hunt for native chestnuts: <https://patacf.org/report-a-tree/>*

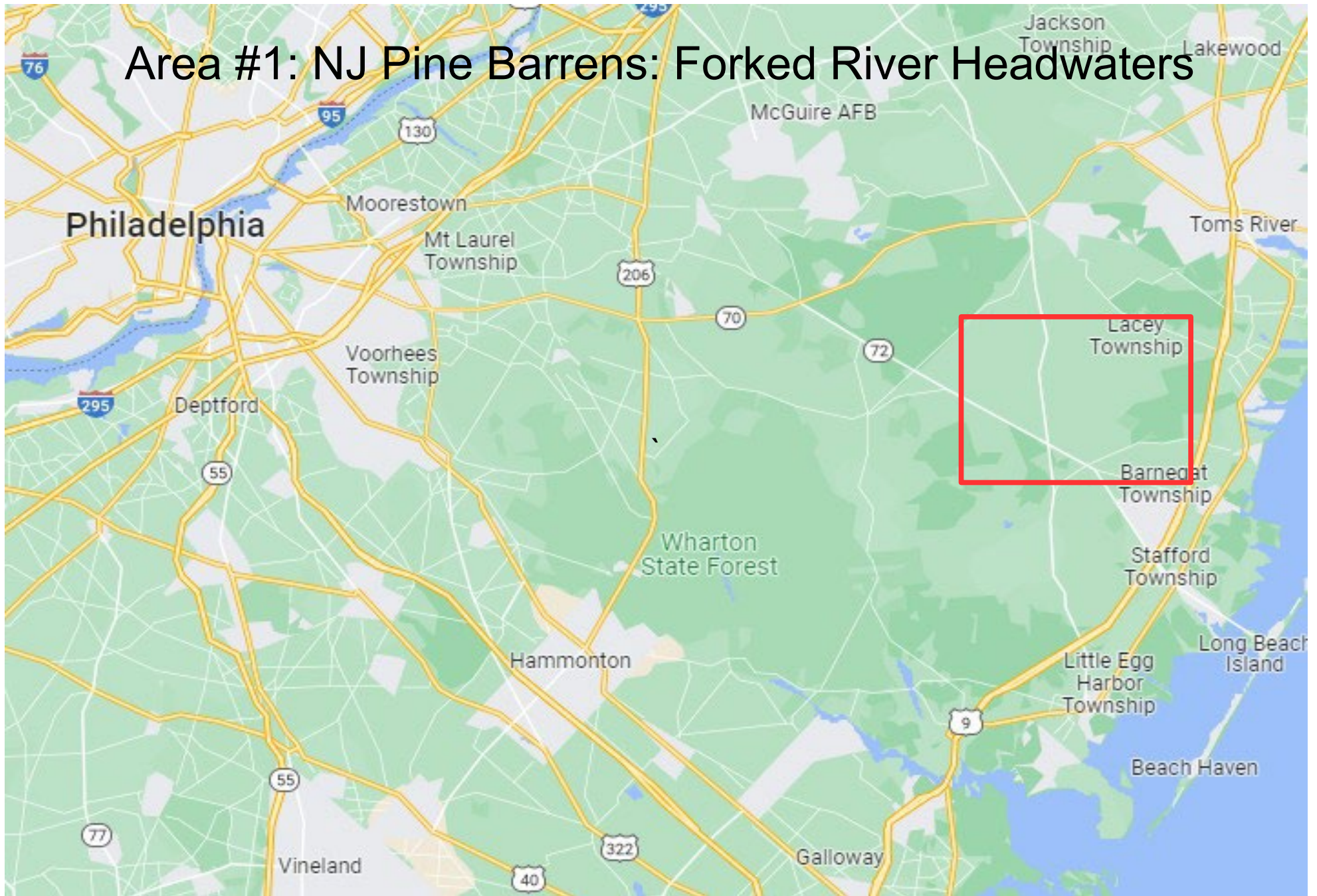
# Interest in Southeastern New Jersey?



- Few trees from this area are in the breeding program
- Variety of habitats near coastal plain and pine barrens may harbor unique local adaptations in surviving populations
- High genetic diversity of sample displayed in Figure 3 of *Genetic Diversity in American Chestnut* by A. Sandercock, J. Westbrook, and J. Holliday published in Chestnut volume 36 issue 1 (Winter 2022). Shown to the left



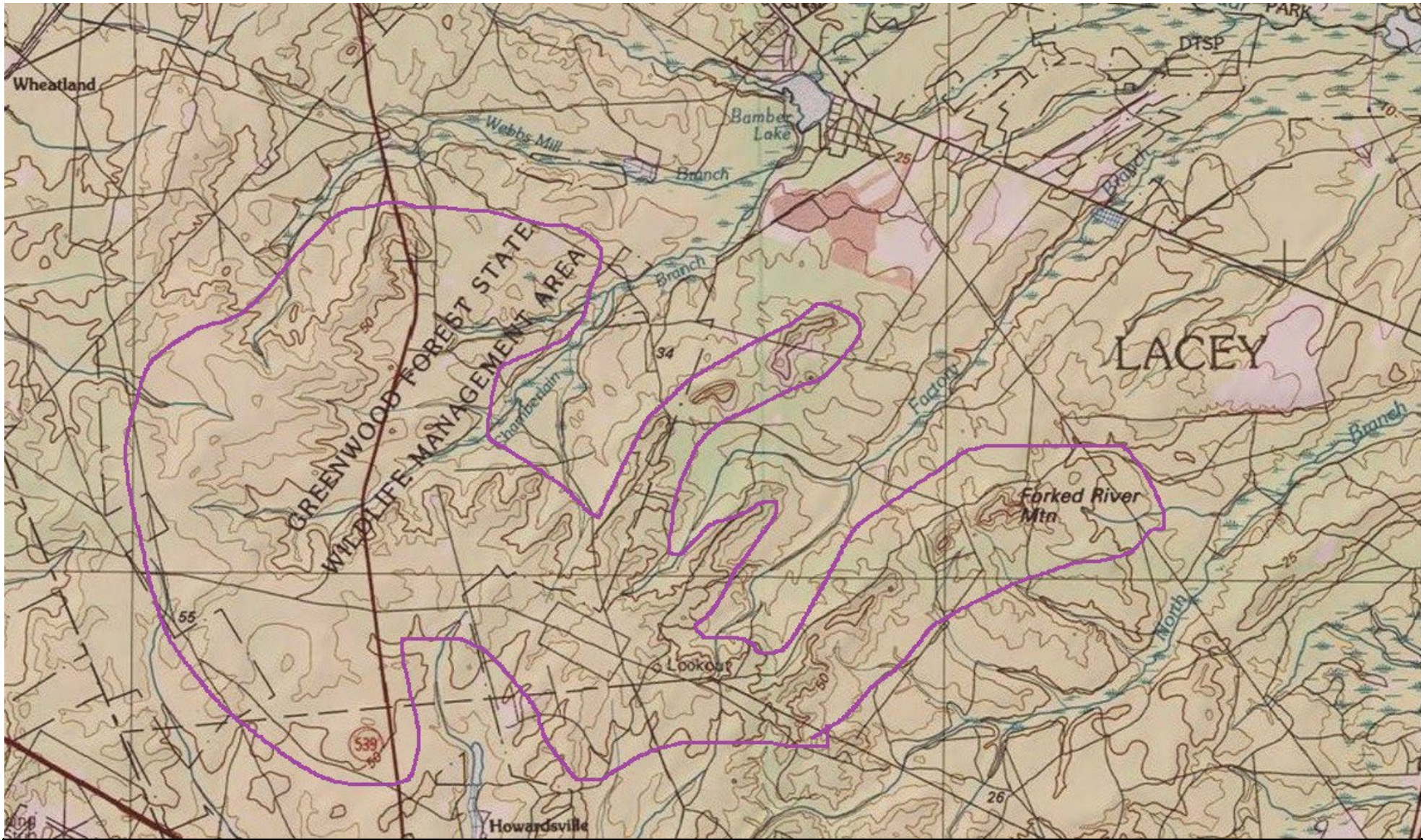
# Area #1: NJ Pine Barrens: Forked River Headwaters





# PA-NJ ACCM 2, Area #1: NJ Pine Barrens: Forked River Headwaters

Ridges and slopes within this low-lying remote area may harbor American chestnut



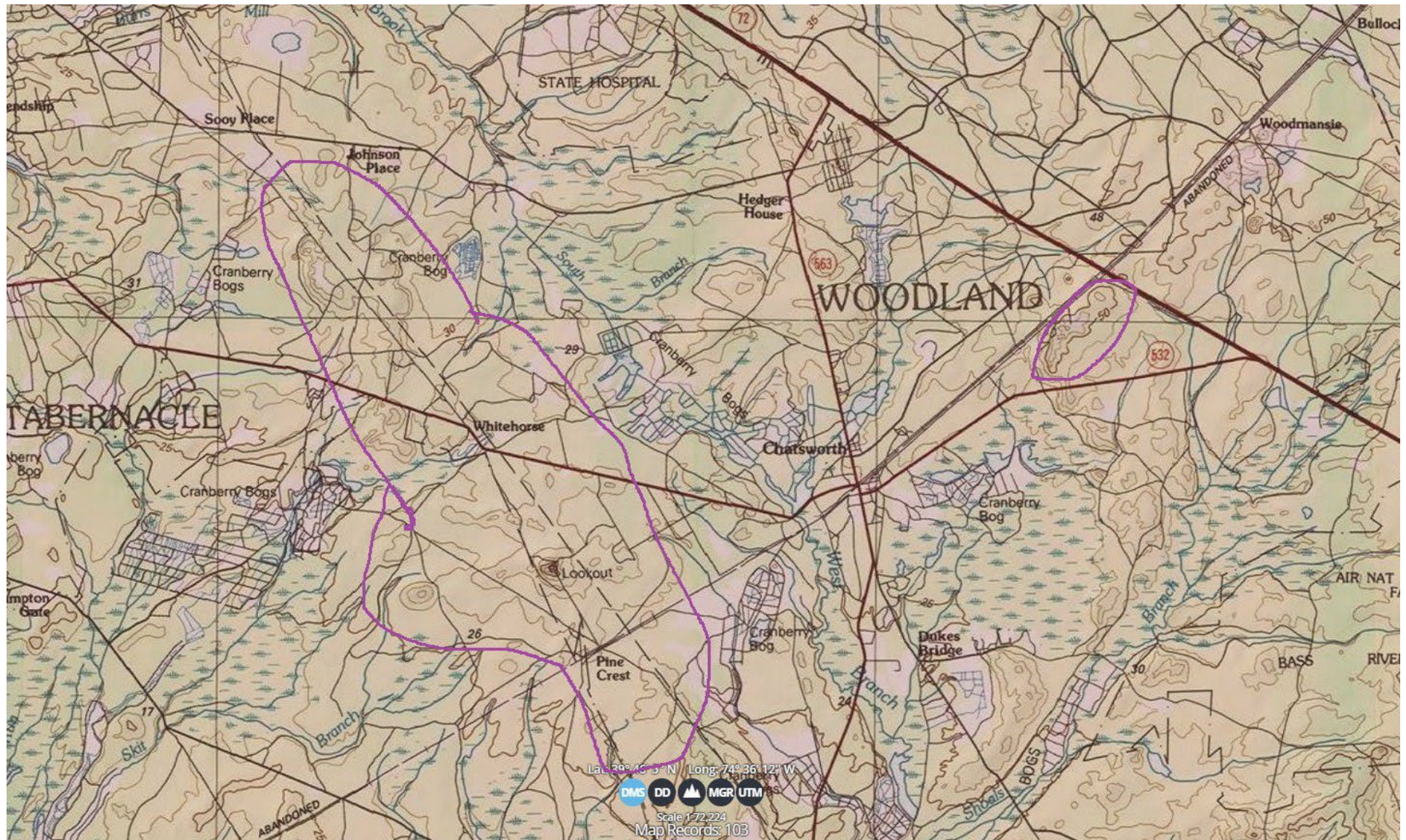


PA-NJ ACCM 2 Area #2: NJ Pine Barrens: Sooy Place – White Horse – Pine Crest



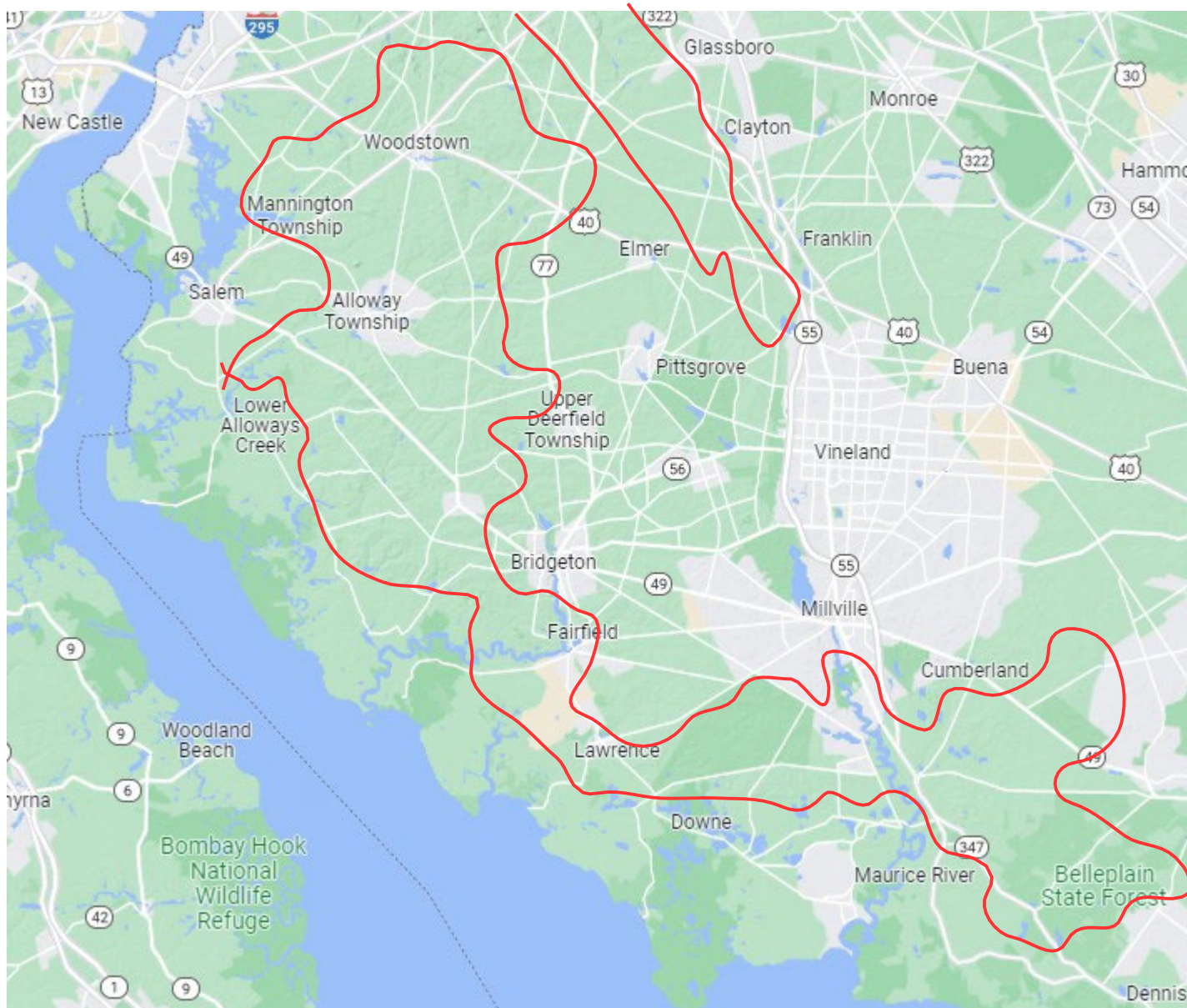
# PA-NJ ACCM 2, Area #2: NJ Pine Barrens: Sooy Place – Whitehorse – Pine Crest

Ridges within this otherwise low-lying remote area may harbor American chesnut





# PA-NJ ACCM 2 Area #3: NJ: River Bluffs of the Delaware Bay



A few American chestnuts have already been identified in this area.

The ridges and slopes of the sandy bluffs overlooking the rivers/ estuaries of this area are the most likely places to have surviving American chestnuts because they provide the species' preferred well-drained soil conditions.



# Author's Appeal: Help Needed for New Jersey

Hello,

And thank you for your interest in helping restore the American chestnut.

The PA-NJ American Chestnut Conservation Missions are targeted to specific areas of interest to the conservation of the American chestnut species within Pennsylvania and New Jersey. These missions are developed by the author based on discussion within the American Chestnut Foundation among members and staff, and reviewed by at least one such other person before being distributed to the membership at large and general public. The areas targeted within each mission are based on the sum of that knowledge.

Knowledge of American chestnut within New Jersey is relatively low despite the chapter's combined knowledge in the author's opinion. At the time of this mission's issue, most board members live in Pennsylvania, and the Author himself has spent very little time in the wild places of New Jersey.

We are actively seeking individuals who are familiar with the New Jersey outdoors to help lead conservation efforts in New Jersey. Please contact us if interested at [mail@patcf.org](mailto:mail@patcf.org).

You may also contact

Lake Graboski (author) at [lake.graboski@gmail.com](mailto:lake.graboski@gmail.com)

Or by letter at 124 Old Tyrone Pike, Philipsburg, PA 16866