



# PENNSYLVANIA CHAPTER

*of The American Chestnut Foundation*

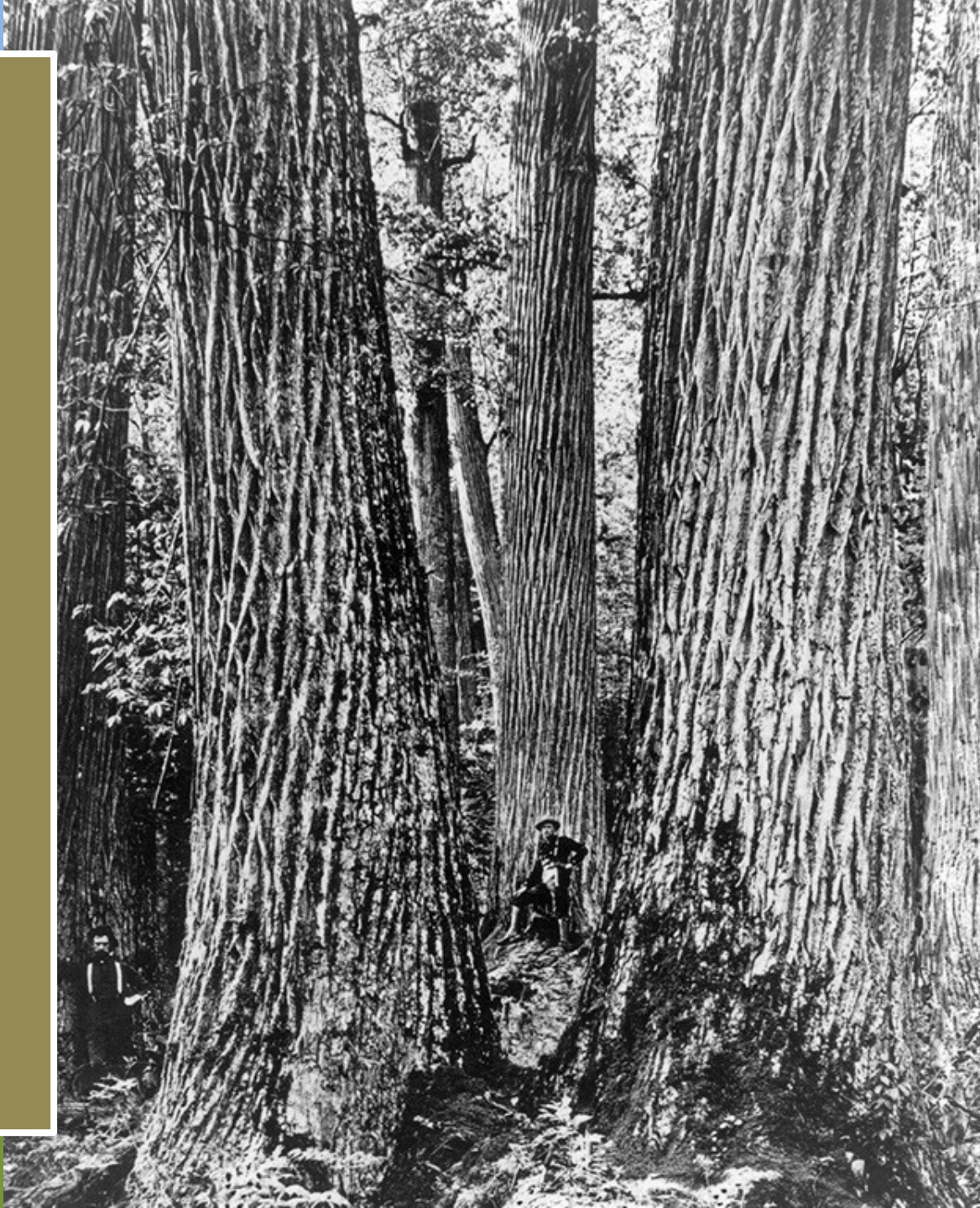




*The return of*  
**A Mighty  
Giant!**

**Our Mission:**

To restore the  
American chestnut  
to the forests and  
woodlands of  
Pennsylvania and  
the mid-Atlantic  
states.

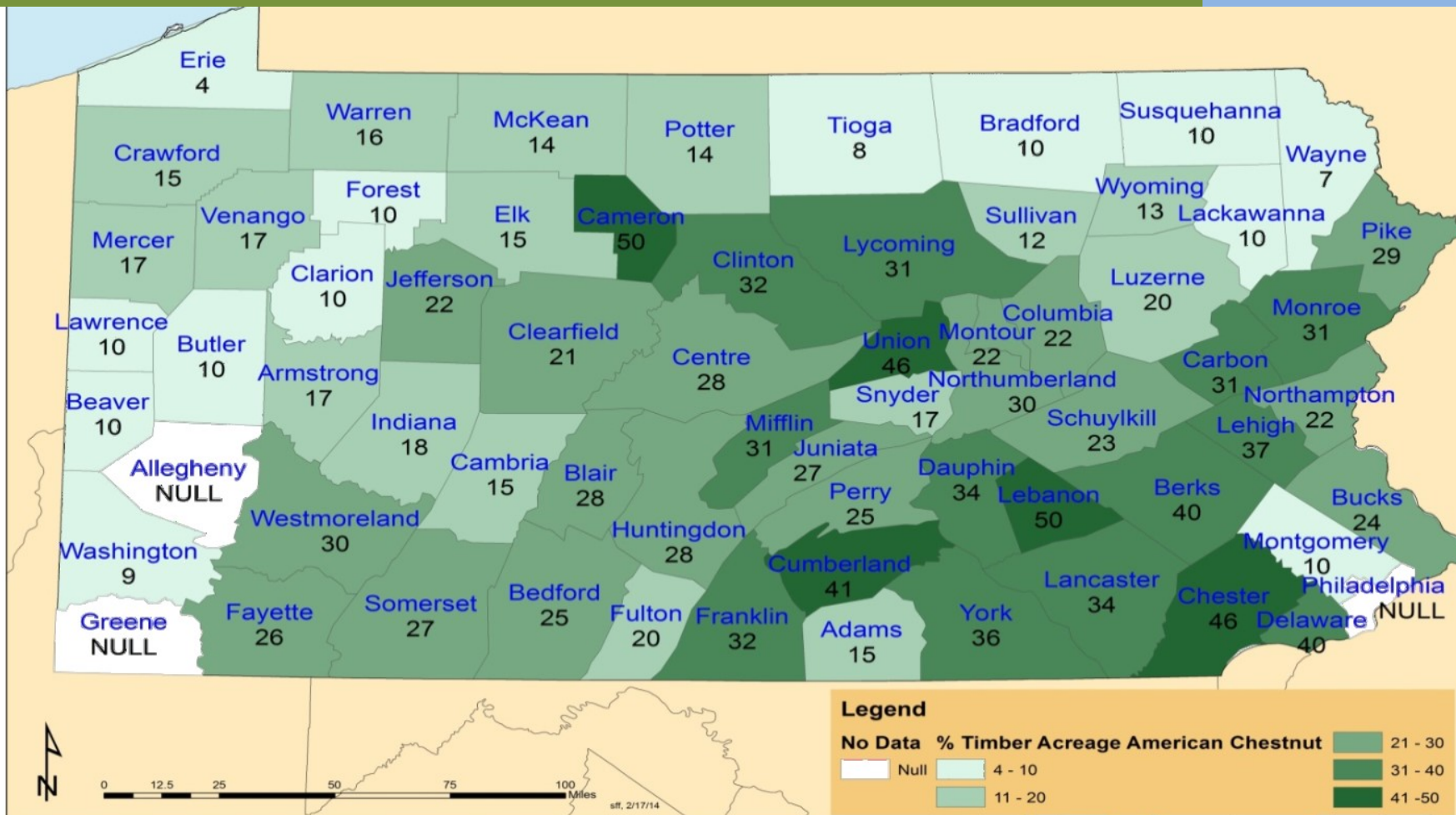




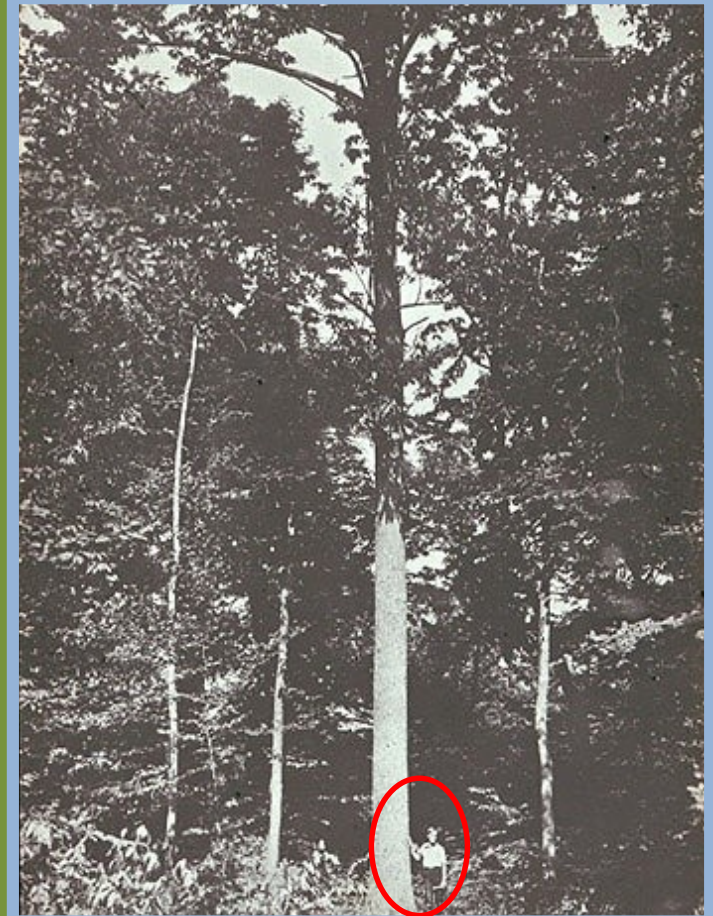


In the  
Appalachian range,  
**ONE IN FOUR**  
trees was  
**American chestnut.**

*The natural range of the  
American chestnut (*Castanea  
dentata*) extended from Mississippi  
to southern Ontario and as far  
northeast as Maine.*



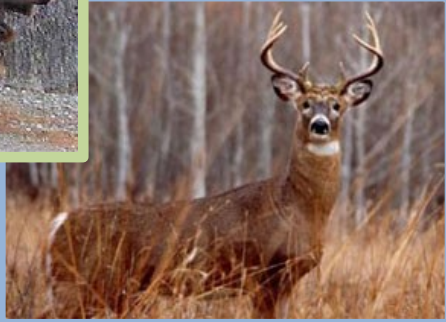




- 100 + feet tall
- Up to **15 feet** in diameter
- Up to 500 years old



# Timber

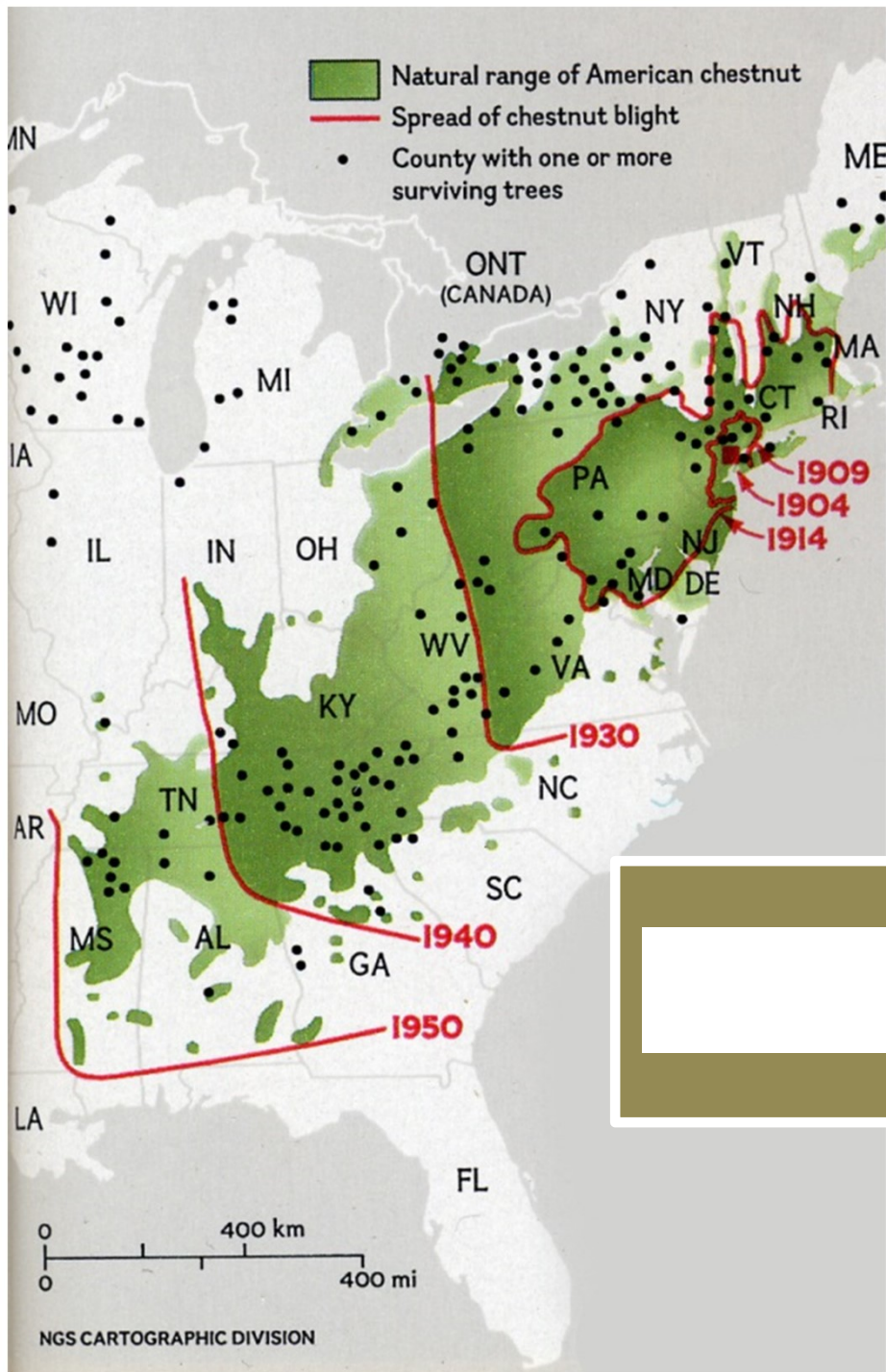


## Food Source



## Tannins





Travelled up to **50 miles per year** post-introduction

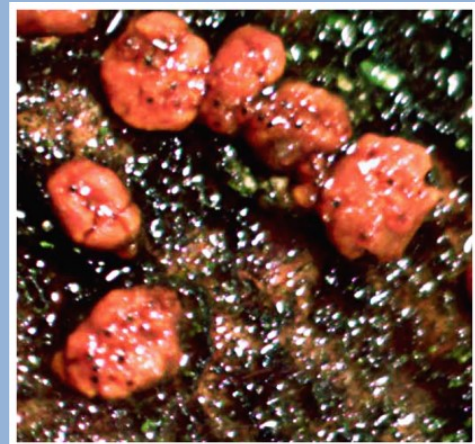




**4 billion**

American chestnut trees gone







stems / sq km

2,559 - 6,539

1,034 - 2,558

450 - 1,033

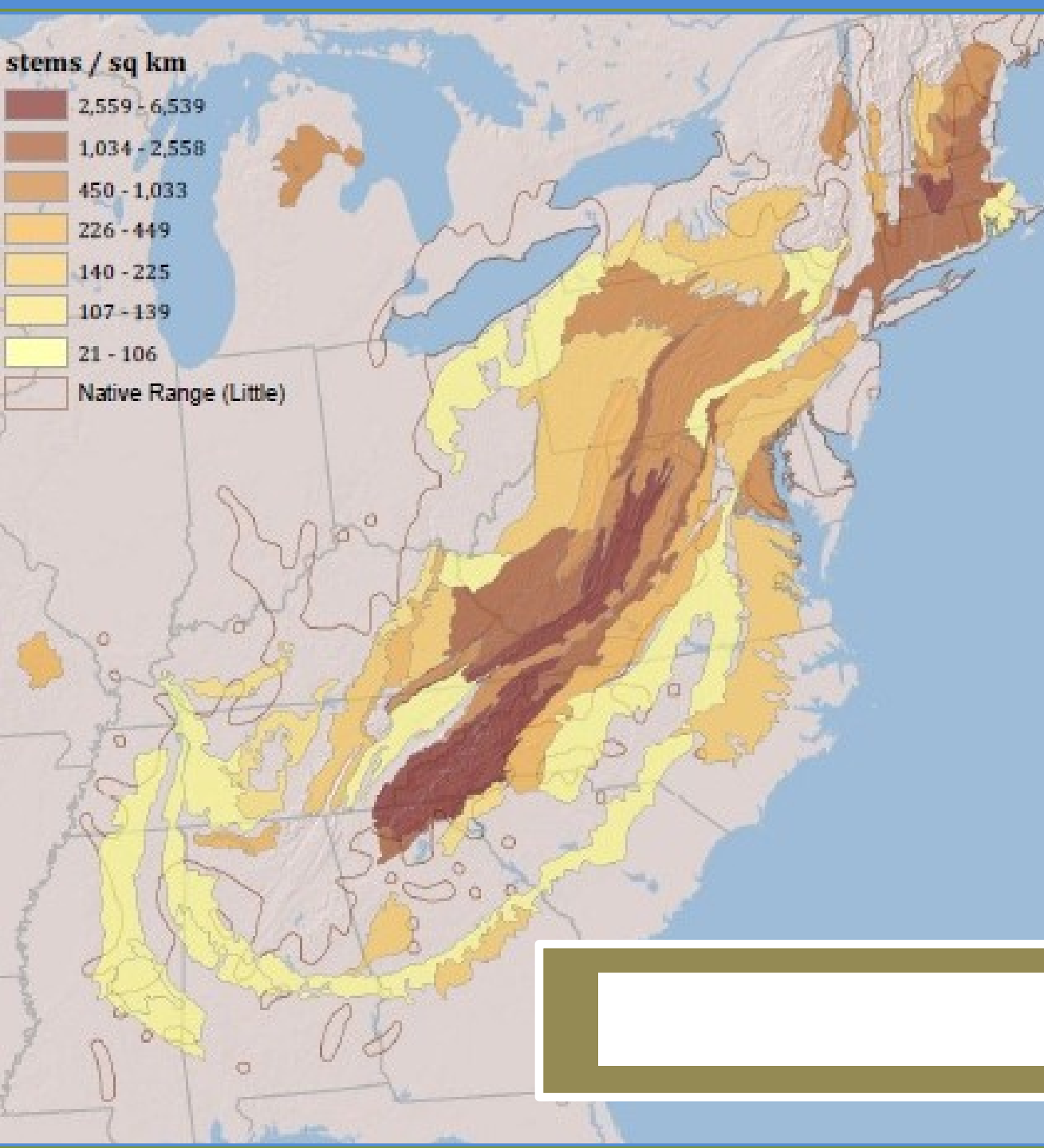
226 - 449

140 - 225

107 - 139

21 - 106

Native Range (Little)





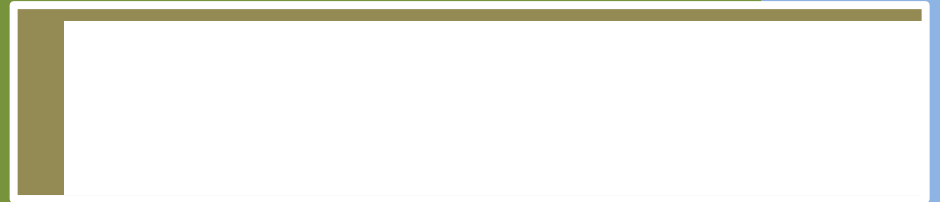


*Chinese Chestnut*



- Most easily found when in bloom
- Male flower: strong scent; long fuzzy flowers





- **American**
- **Chinese**
- **European**
- **Japanese**



# American chestnut

- Leaf **hairless**
- Leaf **thin**
- Leaf **canoe-shaped**
- **Breaking ocean wave** dentation
- Twig **hairless** and red to chestnut-brown
- Bud **smooth**, and brown, **pointed**





# Chinese chestnut

- Leaf **glossy**, usually **hairy** on underside
- Leaf **thick** and **leathery**
- Leaf **oval** with wedge-toothed margins
- Twig **pea-green** and **hairy**
- Bud **round** and pea-green







*The mission of the PA-TACF is to restore the American chestnut to the woodlands of Pennsylvania and New Jersey.*



# American chestnut

(*Castanea dentata*)



Not resistant to blight

Height: 80 – 100 feet ★

Form:  
Dominant canopy tree  
straight trunk ★  
few lower branches

# Chinese/Japanese chestnut

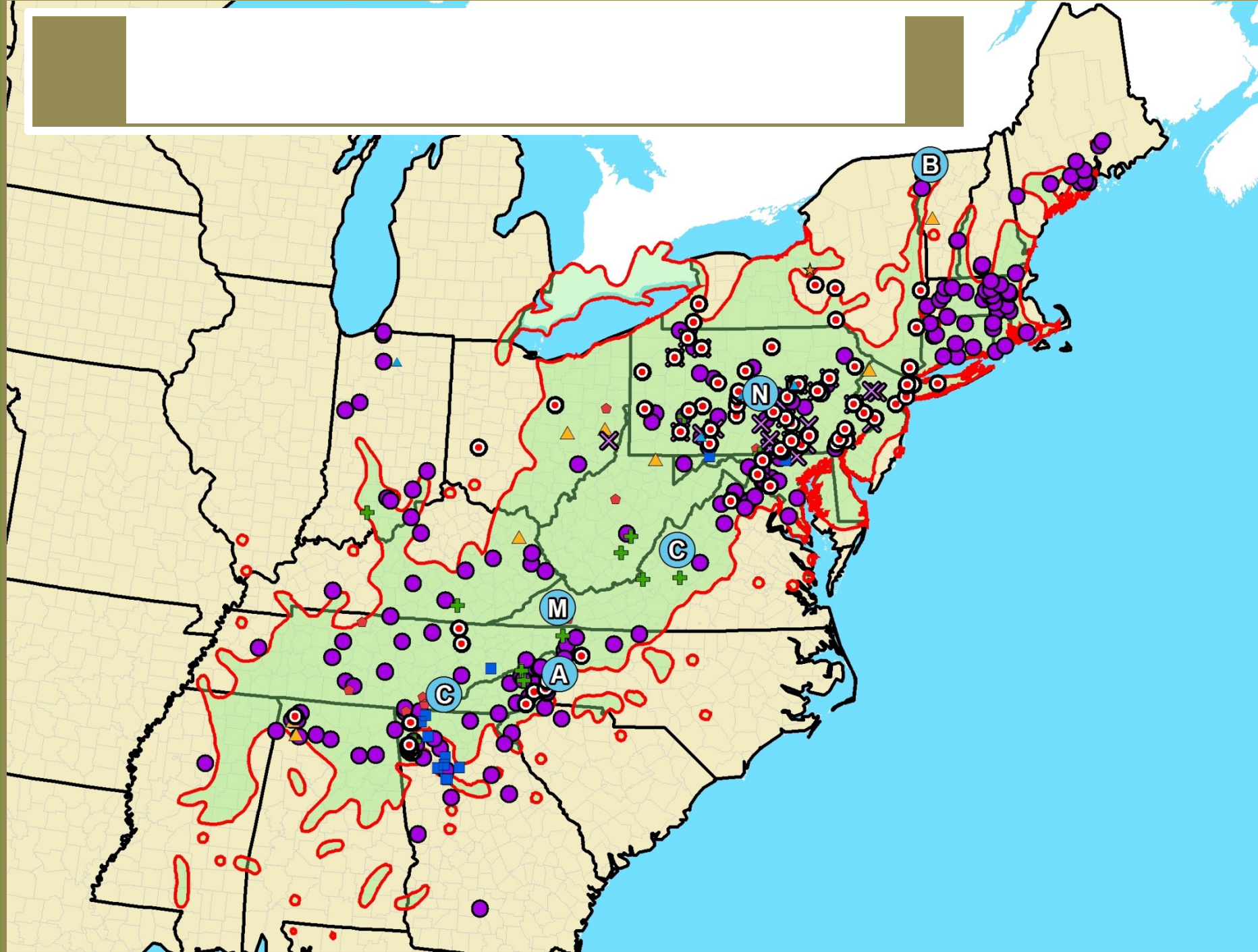
(*Castanea mollissima/crenata*)



Resistant to blight ★

Height: 40 – 60 feet

Form:  
Orchard tree  
many branches







## The PA Chapter:

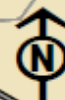
- 1000 + members
- Nearly 100 orchards in PA and NJ



PA-TACF

# PA-TACF Regional Chestnut Breeding Orchards

0 10 20 40 60 80 Miles



## Legend

### Orchard Type

	BC2		BC3F2		CMS BC1
	Educational		BC3F3		Ceremonial
	American		BC2F3		BC4
	BC1		BC3		CMS F1
					Research and Testing
					Mineland

As part of a larger effort to restore the American chestnut tree, PA-TACF has been breeding chestnut trees since 1994. Since then, over 50,000 chestnuts have been planted in Pennsylvania, New Jersey, Maryland, and Delaware.

For more information, please visit [www.patacf.org](http://www.patacf.org) or call our offices at 814-863-7192

01\_04/09/2014





# *Your contribution*

- Membership
- Speak at meetings/ events
- Represent us at meetings and events
- Serve on chapter board
- Volunteer for orchard operations
- Plant and manage a breeding orchard
- Work in chapter office
- Submit an article with us or local paper
- What's your idea?